

Recombinant Human IL17A & IL17F protein, His-Avi-tagged

Cat. No. IL17A & IL17F-01H Lot. No. (See product label)

SPECIFICATION

Product Overview	Recombinant human IL17A&F Protein is expressed from mammalian with a His Tag and Avi Tag at the Cterminal. It contains Gly 24 - Ala 155 (IL-17A) & Arg31-Gln163 .
Species	Human
Source	HEK293
ProteinLength	It contains Gly 24 - Ala 155 (IL-17A) & Arg31-Gln163.
Description	Interleukin-17A (IL-17A), also known as CTLA-8, is a 15-20 kDa glycosylated cytokine that plays an important role in anti-microbial and chronic inflammation. The six IL-17 cytokines (IL-17A-F) are encoded by separate genes but adopt a conserved cystine knot fold .IL-17A is a ligand for IL17RA and IL17RC. The heterodimer formed by IL17A and IL17F is a ligand for the heterodimeric complex formed by IL17RA and IL17RC . Involved in inducing stromal cells to produce proinflammatory and hematopoietic cytokines.
Form	Supplied as 0.22um filtered solution in PBS (pH 7.4).
Molecular Mass	The protein has a predicted MW of 18 kDa (Q16552-1) &15.9 kDa (Q96PD4).Due to glycosylation, the protein migrates to 16KDa&27KDa based on Bis-Tris PAGE result.
Endotoxin	Less than 0.01 EU per ug by the LAL method.

 Tel: 1-631-559-9269 1-516-512-3133

 Email: info@creative-biomart.com  Fax: 1-631-938-8127

 45-1 Ramsey Road, Shirley, NY 11967, USA

Purity	> 95% as determined by Tris-Bis PAGE
Storage	The product should be stored at -70°C. Please do not repeated freeze-thaw cycles.
Reconstitution	It is recommended that sterile water be added to the vial to prepare a stock solution of 0.2 ug/ul. Centrifuge the vial at 4°C before opening to recover the entire contents.

GENE INFORMATION

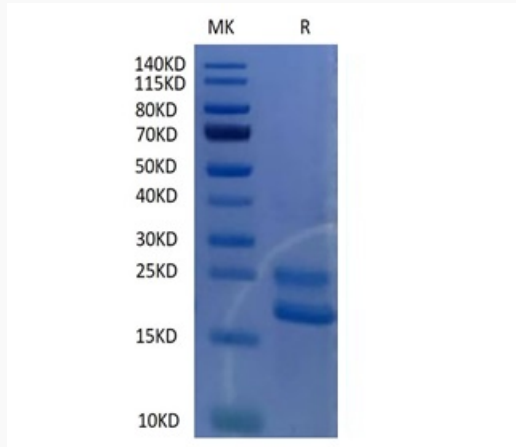
Gene Name	IL17A interleukin 17A [Homo sapiens]
Official Symbol	IL17A ; IL17F
Synonyms	IL-17A, Interleukin-17A, CTLA-8, IL-17, IL-17F, IL24, ML-1, Interleukin-17F
Gene ID	3605
mRNA Refseq	NM_002190
Protein Refseq	NP_002181
MIM	603149
UniProt ID	Q16552

 Tel: 1-631-559-9269 1-516-512-3133

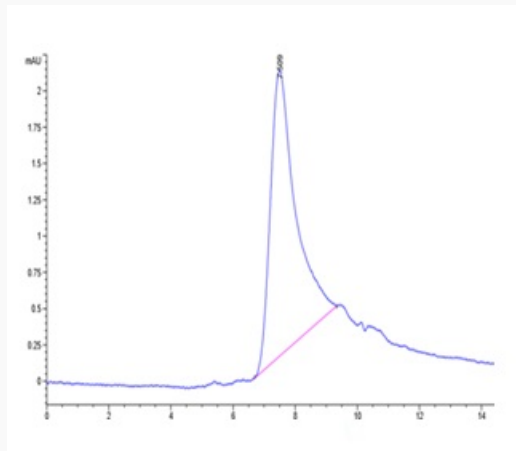
 Email: info@creative-biomart.com  Fax: 1-631-938-8127

 45-1 Ramsey Road, Shirley, NY 11967, USA

Tris-Bis PAGE



HPLC data



 Tel: 1-631-559-9269 1-516-512-3133

 Email: info@creative-biomart.com  Fax: 1-631-938-8127

 45-1 Ramsey Road, Shirley, NY 11967, USA